

# SPEC SHEET + MEASUREMENTS



## Mercer+Mettle® Women's Stretch Open-Front Cardigan. MM3015

### Product photo



Made for moving on and off the clock, this comfy cocoon cardi offers a relaxed fit and fine French terry fabric. Clean design lines, like a back yoke and integrated pockets distinguish its forward-thinking silhouette. **Fabric+Weight**

- 7.4-ounce, 53/41/6 rayon/poly/spandex French terry

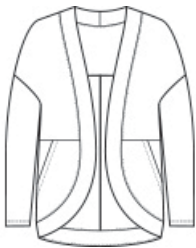
### Features+Benefits

- Softly dropped shoulders
- Back yoke and seaming detail
- Integrated front pockets
- Relaxed fit

### CARE INSTRUCTIONS

Machine Wash Cold With Like Colors. Do Not Use Fabric Softener. Do Not Bleach. Tumble Dry Low. Remove Promptly. Cool Iron If Necessary.

### Sketches



front



back

# SPEC SHEET + MEASUREMENTS



## Mercer+Mettle® Women's Stretch Open-Front Cardigan. MM3015

### PRODUCT MEASUREMENTS

	XS	S	M	L	XL	2XL	3XL	4XL
Size	2	4/6	8/10	12/14	16/18	20/22	24/26	28/30
Body Length at Back	29 1/2	30	30 1/2	31	31 1/2	32	32 1/2	33
Bust	21 3/4	22 3/4	23 3/4	25 1/4	26 3/4	28 1/4	30 1/4	32 1/4
Sleeve Length from Center Back	30 1/2	31	31 1/2	32 1/8	32 3/4	33 3/8	33 3/4	34 1/8

**Body Length at Back:** Measured from high point shoulder to finished hem at back.

**Bust:** Measured across the chest one inch below armhole when laid flat.

**Sleeve Length from Center Back:** Measure from Center Back neck to shoulder point to sleeve hem.

### SIZE CHARTS

	XS	S	M	L	XL	2XL	3XL	4XL
Size	2	4/6	8/10	12/14	16/18	20/22	24/26	28/30
Bust	32-34	35-36	37-38	39-41	42-44	45-47	48-51	52-55

# SPEC SHEET + MEASUREMENTS



Mercer+Mettle® Women's Stretch Open-Front Cardigan.  
MM3015

## HOW TO MEASURE

---



### BUST

Measure under the arm and around the fullest part of the bust with arms down, keeping tape horizontal.

## COLORS

---



Anchor Grey  
PMS 426C



Deep Black  
PMS BLACK  
C



Gusty Grey  
PMS COOL  
GREY 8C



Night Navy  
PMS 532C