

## SPEC SHEET + MEASUREMENTS



### New Era® Power 1/2-Zip. NEA228

#### Product photo



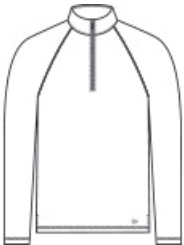
With moisture wicking and stretch, this 1/2-zip gives you powerful performance.

- 4.7-ounce, 91/9 polyester/spandex
- Inner neck locker loop
- Heat transfer label for tag-free comfort
- Raglan sleeves
- Molded zipper
- Reflective silver heat transfer New Era flag logo on left hem

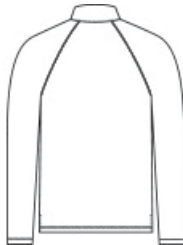
#### CARE INSTRUCTIONS

Machine Wash Cold With Like Colors. Do Not Use Fabric Softener. Only Non-Chlorine Bleach When Needed. Tumble Dry Low. Remove Promptly. Cool Iron If Necessary.

#### Sketches



front



back

# SPEC SHEET + MEASUREMENTS



New Era® Power 1/2-Zip. NEA228

## PRODUCT MEASUREMENTS

|                                   | XS     | S      | M      | L      | XL     | 2XL    | 3XL    | 4XL    |
|-----------------------------------|--------|--------|--------|--------|--------|--------|--------|--------|
| Body Length at Back               | 26 1/2 | 27 1/2 | 28 1/2 | 29 1/2 | 30 1/2 | 31 1/2 | 32 1/4 | 33     |
| Chest                             | 18     | 19 1/2 | 21     | 22 1/2 | 24 1/2 | 26 1/2 | 29     | 32     |
| Raglans and Dolmans Sleeve Length | 33 1/4 | 34     | 34 3/4 | 35 1/2 | 36 1/4 | 37     | 37 3/4 | 38 1/2 |

**Body Length at Back:** Measured from high point shoulder to finished hem at back.

**Chest:** Measured across the chest one inch below armhole when laid flat.

**Raglans and Dolmans Sleeve Length:** Measure from neck edge to finished hem.

## SIZE CHARTS

|       | XS    | S     | M     | L     | XL    | 2XL   | 3XL   | 4XL   |
|-------|-------|-------|-------|-------|-------|-------|-------|-------|
| Chest | 32-34 | 35-37 | 38-40 | 41-43 | 44-47 | 48-51 | 52-56 | 57-61 |

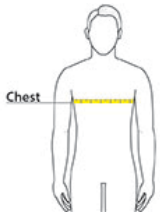
# SPEC SHEET + MEASUREMENTS



New Era® Power 1/2-Zip. NEA228

## HOW TO MEASURE

---



### CHEST

Measure under the arm and around the fullest part of the chest with arms down, keeping tape horizontal.

## COLORS

---



Black  
PMS BLACK  
C



Shadow Grey  
Heather  
PMS COOL  
GREY 10C



True Navy  
PMS 533C