

SPEC SHEET + MEASUREMENTS



New Era® Track Jacket. NEA650

Product photo



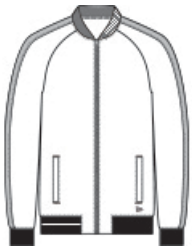
Cotton-rich with a matte finish, this track jacket has traditional details reimaged with modern New Era attitude.

- 6.5-ounce, 53/47 cotton/poly
- Heat transfer label for tag-free comfort
- Rib knit collar
- Exposed Vislon® locking zipper
- Elastic trim on sleeves
- Front pockets
- Rib knit cuffs and hem
- Debossed silicone New Era flag logo at hem

CARE INSTRUCTIONS

Machine wash cold with like colors. Do not use fabric softener. Only non-chlorine bleach when needed. Tumble dry low. Remove promptly. Cool iron if necessary. Do not dry clean.

Sketches



front



back

PRODUCT MEASUREMENTS

	XS	S	M	L	XL	2XL	3XL	4XL
Body Length at Back	26	27	28	29	30	31	31 1/2	32
Chest	18 1/2	20	21 1/2	23	24 1/2	26	28	30
Sleeve Length from Center Back	33 3/4	34 1/2	35 1/4	36	36 3/4	37 1/2	38 1/4	39

Body Length at Back: Measured from high point shoulder to finished hem at back.

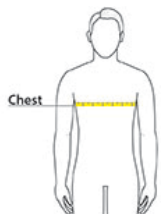
Chest: Measured across the chest one inch below armhole when laid flat.

Sleeve Length from Center Back: Measure from Center Back neck to shoulder point to sleeve hem.

SIZE CHARTS

	XS	S	M	L	XL	2XL	3XL	4XL
Chest	32-34	35-37	38-40	41-43	44-47	48-51	52-56	57-61

HOW TO MEASURE



CHEST

Measure under the arm and around the fullest part of the chest with arms down, keeping tape horizontal.