

SPEC SHEET + MEASUREMENTS



The North Face® Packable Travel Jacket. NF0A5ISG

Product photo



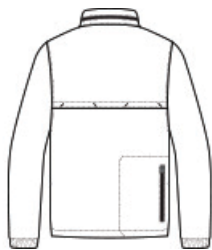
Whether you're going across town or around the world, this windproof, water-resistant packable jacket is a travel essential. A stowable, adjustable hood is there when you need it and gone when you don't.

- 133 g/m2 WindWall™—95/5 nylon/elastane with durable water-repellent (DWR) finish (body)
- 100% polyester ripstop with durable water-repellent (DWR) finish (hood)
- 100% windproof fabric with DWR finish
- Stowable, adjustable hood
- Jacket packs into its own zippered back pocket for ultimate traveling convenience
- Reverse-coil center front zipper
- Two utility chest pockets
- Secure-zip hand pockets
- Vented back yoke
- Elastic cuffs
- Embroidered The North Face logo at left bicep

Sketches



front



back

BENEFITS DURABLE WATER-REPELLENT WIND PROTECTION PACKABLE/STOWABLE CARE INSTRUCTIONS

Machine Wash Warm Gentle Cycle. Wash Inside Out And Separately. Close All Fasteners Before Washing. Wash With Mild Detergent. Rinse Well. Do Not Bleach. Tumble Dry Low. Do Not Iron. Do Not Dry Clean.

PRODUCT MEASUREMENTS

	S	M	L	XL	2XL	3XL
Body Length at Back	27 7/8	28 1/2	29 3/8	30 3/8	31 3/8	32 3/8
Chest	20 3/4	22 1/4	23 3/4	25 3/4	27 3/4	29 3/4
Sleeve Length from Center Back	35 1/2	36	36 3/4	37 1/2	38 1/4	39

Body Length at Back: Measured from high point shoulder to finished hem at back.

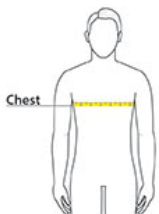
Chest: Measured across the chest one inch below armhole when laid flat.

Sleeve Length from Center Back: Measure from Center Back neck to shoulder point to sleeve hem.

SIZE CHARTS

	S	M	L	XL	2XL	3XL
Chest	36-38	39-41	42-44	45-48	49-52	53-56

HOW TO MEASURE



CHEST

Measure under the arm and around the fullest part of the chest with arms down, keeping tape horizontal.