

## SPEC SHEET + MEASUREMENTS



### The North Face® Women's Barr Lake Soft Shell Jacket. NF0A8C5C

#### Product photo



Ready to perform on those high-energy days when dark clouds look ominous, the multi-purpose Barr Lake Soft Shell features two-way mechanical stretch, WindWall™ fabric and an adjustable hem. • 310 g/m<sup>2</sup> WindWall™—50/50 recycled polyester/polyester with non-PFC durable water-repellent (DWR) finish

- Two-way mechanical stretch • Interior locker loop at back of neckline
- Raglan sleeves for better mobility
- Exposed Vislon® center front zipper with zipper garage at neck
- Exposed zippered hand pockets
- Drawcord with cord lock at hem for adjustability
- Contrast heat transfer The North Face logo on left chest and right back shoulder

#### **BENEFITS**

**DURABLE WATER-REPELLENT:** DWR is applied to the face of the fabric to provide the first line of defense against wet weather.

**WIND PROTECTION:** WindWall™ fabrics greatly reduce the effects of wind chill while providing flexibility and breathability to stay comfortable without overheating.

**STRETCH:** This product contains material with stretch that allows for greater range of mobility.

**RECYCLED CONTENT:** Made from post-consumer, recycled content.

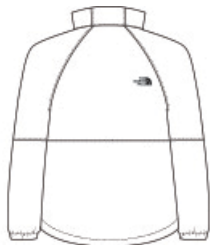
#### **CARE INSTRUCTIONS**

Machine Wash Warm Gentle Cycle. Wash Inside Out And Separately. Close All Fasteners Before Washing. Wash With Mild Detergent. Rinse Well. Do Not Bleach. Tumble Dry Low. Do Not Iron. Do Not Dry Clean.

#### Sketches



front



back

# SPEC SHEET + MEASUREMENTS



## The North Face® Women's Barr Lake Soft Shell Jacket. NF0A8C5C

### PRODUCT MEASUREMENTS

	XS	S	M	L	XL	2XL
Size	2	4/6	8/10	12/14	16/18	20/22
Body Length at Back	24 1/4	24 7/8	25 1/2	26 3/8	27 1/4	28 1/8
Bust	19 1/2	20 3/4	22	23 1/2	25 1/4	27
Raglans and Dolmans Sleeve Length	32	32 1/2	33	33 1/2	34	34 1/2

**Body Length at Back:** Measured from high point shoulder to finished hem at back.

**Bust:** Measured across the chest one inch below armhole when laid flat.

**Raglans and Dolmans Sleeve Length:** Measure from neck edge to finished hem.

### SIZE CHARTS

	S	M	L	XL	2XL
Size	4/6	8/10	12/14	16/18	20/22
Bust	33-35	36-38	39-41	42/44	45-48

## SPEC SHEET + MEASUREMENTS



The North Face® Women's Barr Lake Soft Shell Jacket.  
NF0A8C5C

### HOW TO MEASURE

---



#### BUST

Measure under the arm and around the fullest part of the bust with arms down, keeping tape horizontal.

### COLORS

---



Asphalt Grey  
Dark Heather  
PMS Black 7C



Khaki Stone  
Dark Heather



Shady Blue  
Dark Heather  
PMS 2380C



TNF Black  
Heather  
PMS Black C