

SPEC SHEET + MEASUREMENTS



Nike Dry Raglan Polo. NKBV6047

Product photo



With bold contrasting collar and sleeves, this polo boasts raglan sleeves for easier movement and Dri-FIT moisture management technology to help keep you cooler and drier. Design features include a flat knit collar, two-button placket with dyed-to-match buttons, open hem sleeves, side vents and a back seaming detail. A contrast Swoosh design trademark is embroidered on the left sleeve. Made of 3.9-ounce, 100% polyester Dri-FIT fabric.

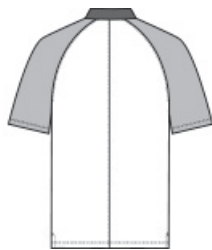
CARE INSTRUCTIONS

Care instructions. Machine wash cold (30c). Wash inside out; wash with like colors, do not use softeners, do not use bleach, tumble dry low, do not iron, do not dry clean.

Sketches



front



back

PRODUCT MEASUREMENTS

| | XS | S | M | L | XL | 2XL | 3XL | 4XL |
|---------------------|--------|--------|--------|--------|--------|--------|--------|--------|
| Body Length at Back | 28 3/4 | 29 1/8 | 29 1/4 | 30 3/8 | 31 1/2 | 32 5/8 | 33 7/8 | 35 |
| Chest | 18 3/4 | 20 1/2 | 22 | 23 5/8 | 25 5/8 | 27 1/2 | 29 1/2 | 31 1/2 |
| Sleeve Length | 14 1/4 | 14 5/8 | 15 1/8 | 15 1/2 | 16 | 16 5/8 | 17 1/8 | 17 3/4 |

Body Length at Back: Measured from high point shoulder to finished hem at back.

Chest: Measured across the chest one inch below armhole when laid flat.

Sleeve Length: Start at center of neck and measure down shoulder, down sleeve to hem.

SIZE CHARTS

| | XS | S | M | L | XL | 2XL | 3XL | 4XL |
|-------|-------|--------------|---------------|-------|--------------|-------------------|----------------|-------|
| Chest | 32-35 | 35-37 1/2 | 37 1/2 -41 | 41-44 | 44-48 1/2 | 48 1/2 -53 1/2 | 53 1/2 - 58 | 58-63 |

HOW TO MEASURE



CHEST

Measure under the arm and around the fullest part of the chest with arms down, keeping tape horizontal.