

SPEC SHEET + MEASUREMENTS



OGIO® Origin Jacket. OE503

Product photo



COTTON-RICH SOFTNESS

STAY-COOL WICKING

LAYERABLE WARMTH

- 8.1-ounce, 64/36 cotton/poly flatback knit
- OGIO heat transfer label for tag-free comfort
- Zip-through collar
- Exposed coil zipper with molded cord pull
- Stacked O heat transfers at center back
- Welded front zippered pockets with locking pulls
- O heat transfer at right pocket
- Raglan sleeves with welded, articulated elbows
- O heat transfer at upper left sleeve
- OGIO binding at cuffs and hem
- Slight drop tail hem

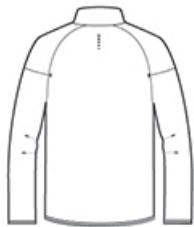
CARE INSTRUCTIONS

Machine wash cold with like colors. Remove promptly. Only non chlorine bleach when needed. Tumble dry low. Cool iron if needed. Do not dry clean

Sketches



front



back

PRODUCT MEASUREMENTS

	XS	S	M	L	XL	2XL	3XL	4XL
Body Length at Back	27	28	29	30	30	31	32	32 1/2
Chest	19	20 1/2	22	23 1/2	25	26 1/2	28 1/2	30 1/2
Sleeve Length from Center Back	33 3/4	34 1/2	35 1/4	36	36 3/4	37 1/2	38 1/4	39

Body Length at Back: Measured from high point shoulder to finished hem at back.

Chest: Measured across the chest one inch below armhole when laid flat.

Sleeve Length from Center Back: Measure from Center Back neck to shoulder point to sleeve hem.

SIZE CHARTS

	XS	S	M	L	XL	2XL	3XL	4XL
Chest	32-34	35-37	38-40	41-43	44-46	47-49	50-53	54-57

HOW TO MEASURE



CHEST

Measure under the arm and around the fullest part of the chest with arms down, keeping tape horizontal.