

SPEC SHEET + MEASUREMENTS



OGIO® Tread Polo. OG135

Product photo



This polo dares to tread on the edge with its slightly linear stripe and black pinpoint dot appearance.

- 4.6-ounce, 73/21/6 cotton/poly/spandex jacquard jersey with stay-cool wicking technology
- OGIO heat transfer label for tag-free comfort
- Self-fabric collar
- 3-button placket with flat metal buttons
- Contrast coverstitching on back yoke and sleeves
- Set-in, open hem sleeves
- Rubber heat transfer O on left sleeve

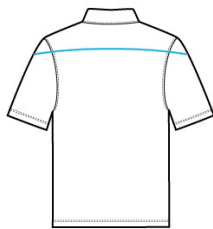
CARE INSTRUCTIONS

Machine wash cold with like colors. Do not bleach. Tumble dry low. Cool iron. Do not use fabric softener. Do not dry clean.

Sketches



front



back

SPEC SHEET + MEASUREMENTS



OGIO® Tread Polo. OG135

PRODUCT MEASUREMENTS

	XS	S	M	L	XL	2XL	3XL	4XL
Body Length at Front	28	29	30	31	32	33	33 1/2	34
Chest	18 1/4	19 3/4	21 1/4	22 3/4	24 1/4	25 3/4	27 3/4	29 3/4
Sleeve Length	17	17 3/4	18 1/2	19 1/4	20	20 3/4	21 1/2	22 1/4

Body Length at Front: Measure from high point shoulder to lowest point of hem at front.

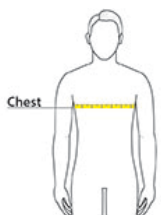
Chest: Measured across the chest one inch below armhole when laid flat.

Sleeve Length: Start at center of neck and measure down shoulder, down sleeve to hem.

SIZE CHARTS

	XS	S	M	L	XL	2XL	3XL	4XL
Chest	32-34	35-37	38-40	41-43	44-46	47-49	50-53	54-57

HOW TO MEASURE



CHEST

Measure under the arm and around the fullest part of the chest with arms down, keeping tape horizontal.

SPEC SHEET + MEASUREMENTS



OGIO® Tread Polo. OG135

COLORS



Blacktop
Heather
PMS 7540C



Blue Heather



Grey Heather