

# SPEC SHEET + MEASUREMENTS



## OGIO® Revive Full-Zip. OG162

### Product photo



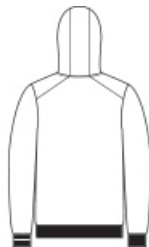
Revive your corporate or casual wardrobe with this comfortable, versatile double-knit layering essential that has modern angled lines and OGIO edge.

- 9-ounce, 67/30/3 poly/rayon/spandex double knit (Blacktop)
- 9-ounce, 65/32/3 poly/rayon/spandex double knit (Light Heather Grey)
- OGIO heat transfer label for tag-free comfort
- 3-panel hood
- Matte black eyelets with stretch drawcords and matte black dipped tips
- Reverse coil zipper
- Open pockets
- Rib knit cuffs
- Black woven OGIO label on left hip
- Rib knit hem

### Sketches



front



back

### CARE INSTRUCTIONS

Machine Wash Cold With Like Colors. Do Not Use Fabric Softener. Do Not Bleach. Tumble Dry Low. Cool Iron.

# SPEC SHEET + MEASUREMENTS



OGIO® Revive Full-Zip. OG162

## PRODUCT MEASUREMENTS

	XS	S	M	L	XL	2XL	3XL	4XL
Body Length at Back	27	28	29	30	31	32	32 1/2	33
Chest	18 1/2	20	21 1/2	23	24 1/2	26	28	30
Sleeve Length from Center Back	34 1/4	35	35 3/4	36 1/2	37 1/4	38	38 3/4	39 1/2

**Body Length at Back:** Measured from high point shoulder to finished hem at back.

**Chest:** Measured across the chest one inch below armhole when laid flat.

**Sleeve Length from Center Back:** Measure from Center Back neck to shoulder point to sleeve hem.

## SIZE CHARTS

	XS	S	M	L	XL	2XL	3XL	4XL
Chest	32-34	35-37	38-40	41-43	44-46	47-49	50-53	54-57

# SPEC SHEET + MEASUREMENTS



OGIO® Revive Full-Zip. OG162

## HOW TO MEASURE

---



### CHEST

Measure under the arm and around the fullest part of the chest with arms down, keeping tape horizontal.

## COLORS

---



Blacktop  
PMS Black C



Light Heather  
Grey  
PMS COOL  
GRAY 5C