

## SPEC SHEET + MEASUREMENTS



### OGIO® Trax Jacket. OG726

#### Product photo



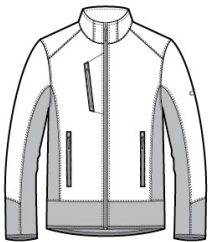
This water-resistant, forward-thinking jacket fuses a technical grid pattern with stretch side panels for style that moves at your speed.

- 100% woven poly shell bonded to 100% poly knit fleece with 93/7 poly/spandex fleece side panels
- OGIO heat transfer label for tag-free comfort
- Reverse coil zippers
- Right chest pocket
- Zippered front pockets with OGIO zipper pulls
- Black reflective O on left sleeve
- Open cuffs and open drop tail hem with binding

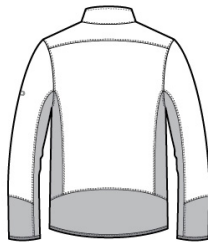
#### CARE INSTRUCTIONS

Machine wash cold with like colors. Do not bleach. Tumble dry low. Remove Promptly. Cool iron if needed.

#### Sketches



front



back

# SPEC SHEET + MEASUREMENTS



OGIO® Trax Jacket. OG726

## PRODUCT MEASUREMENTS

|                      | XS     | S      | M      | L      | XL     | 2XL    | 3XL    | 4XL    |
|----------------------|--------|--------|--------|--------|--------|--------|--------|--------|
| Body Length at Front | 27 1/4 | 28 1/4 | 29 1/4 | 30 1/4 | 31 1/4 | 32 1/4 | 32 3/4 | 33 1/4 |
| Chest                | 18 1/2 | 20     | 21 1/2 | 23     | 24 1/2 | 26     | 28     | 30     |
| Sleeve Length        | 34 1/4 | 35     | 35 3/4 | 36 1/2 | 37 1/4 | 38     | 38 3/4 | 39 1/2 |

**Body Length at Front:** Measure from high point shoulder to lowest point of hem at front.

**Chest:** Measured across the chest one inch below armhole when laid flat.

**Sleeve Length:** Start at center of neck and measure down shoulder, down sleeve to hem.

## SIZE CHARTS

|       | XS    | S     | M     | L     | XL    | 2XL   | 3XL   | 4XL   |
|-------|-------|-------|-------|-------|-------|-------|-------|-------|
| Chest | 32-34 | 35-37 | 38-40 | 41-43 | 44-46 | 47-49 | 50-53 | 54-57 |

## HOW TO MEASURE



### CHEST

Measure under the arm and around the fullest part of the chest with arms down, keeping tape horizontal.

## SPEC SHEET + MEASUREMENTS



OGIO® Trax Jacket. OG726

### COLORS

---



Blacktop  
PMS BLACK  
C