

## SPEC SHEET + MEASUREMENTS



### OGIO® Grit Fleece Jacket. OG727

#### Product photo



With a unique and rugged texture, this jacket shows real grit. Heavy gauge knit, an embossed lining and understated details give it a sharp take on utility and comfort.

- 12.4-ounce, 100% poly knit bonded to 100% poly brushed-back fleece
- Zip-through cadet collar
- OGIO heat transfer label for tag-free comfort
- OGIO locker loop
- Embossed lining with subtle O pattern
- Reverse coil zipper with OGIO zipper pull
- Embroidered O on front and back
- Front zippered pockets
- Open cuffs and hem

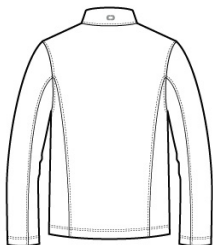
#### CARE INSTRUCTIONS

Machine wash cold, only non-chlorine bleach when needed, tumble dry medium, warm iron if necessary.

#### Sketches



front



back

# SPEC SHEET + MEASUREMENTS



OGIO® Grit Fleece Jacket. OG727

## PRODUCT MEASUREMENTS

	XS	S	M	L	XL	2XL	3XL	4XL
Body Length at Front	26 1/2	27 1/2	28 1/2	29 1/2	30 1/2	31 1/2	32	32 1/2
Chest	18 1/2	20	21 1/2	23	24 1/2	26	28	30
Sleeve Length	33 3/4	34 1/2	35 1/4	36	36 3/4	37 1/2	38 1/4	39

**Body Length at Front:** Measure from high point shoulder to lowest point of hem at front.

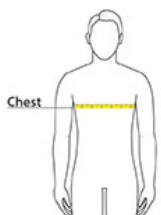
**Chest:** Measured across the chest one inch below armhole when laid flat.

**Sleeve Length:** Start at center of neck and measure down shoulder, down sleeve to hem.

## SIZE CHARTS

	XS	S	M	L	XL	2XL	3XL	4XL
Chest	32-34	35-37	38-40	41-43	44-46	47-49	50-53	54-57

## HOW TO MEASURE



### CHEST

Measure under the arm and around the fullest part of the chest with arms down, keeping tape horizontal.

# SPEC SHEET + MEASUREMENTS



OGIO® Grit Fleece Jacket. OG727

## COLORS

---



Blacktop  
PMS BLACK  
C



Diesel Grey  
Heather  
PMS BLACK  
C



Gear Grey  
PMS 7540C