

# SPEC SHEET + MEASUREMENTS



OGIO® Flux 1/4-Zip. OG823

## Product photo



This easy-to-layer piece has a clean, modern OGIO look with jacquard side panels for modern style.

- 9.7-ounce, 96/4 poly/cotton knit shell
- 9.7-ounce, 96/4 poly/cotton jacquard knit insets
- Locking reverse coil zipper
- Forward shoulders
- Jacquard knit insets on shoulders and side panels
- Zippered pockets
- Jacquard knit back panel that rolls forward to the forward shoulder
- Black reflective welding detail on back
- Black reflective O heat transfer on front left hem

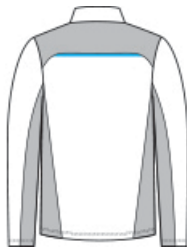
## CARE INSTRUCTIONS

Machine Wash Cold Gentle Cycle With Like Colors. Only Non-Chlorine Bleach When Needed. Tumble Dry Low. Cool Iron If Necessary. Do Not Dry Clean.

## Sketches



front



back

# SPEC SHEET + MEASUREMENTS



OGIO® Flux 1/4-Zip. OG823

## PRODUCT MEASUREMENTS

	XS	S	M	L	XL	2XL	3XL	4XL
Body Length at Back	26 1/2	27 1/2	28 1/2	29 1/2	30 1/2	31 1/2	32	32 1/2
Chest	18	19 1/2	21	22 1/2	24	25 1/2	27 1/2	29 1/2
Sleeve Length from Center Back	34 3/4	35 1/2	36 1/4	37	37 3/4	38 1/2	39 1/4	40

**Body Length at Back:** Measured from high point shoulder to finished hem at back.

**Chest:** Measured across the chest one inch below armhole when laid flat.

**Sleeve Length from Center Back:** Measure from Center Back neck to shoulder point to sleeve hem.

## SIZE CHARTS

	XS	S	M	L	XL	2XL	3XL	4XL
Chest	32-34	35-37	38-40	41-43	44-46	47-49	50-53	54-57

# SPEC SHEET + MEASUREMENTS



OGIO<sup>®</sup> Flux 1/4-Zip. OG823

## HOW TO MEASURE

---



### CHEST

Measure under the arm and around the fullest part of the chest with arms down, keeping tape horizontal.

## COLORS

---



Blacktop  
Heather  
PMS BLACK  
C



Tarmac Grey  
Heather  
PMS 7540C