

## SPEC SHEET + MEASUREMENTS



### OGIO® Luuma Flex Long Sleeve Crew. OG825

#### Product photo



Cozy but refined, this OGIO look is elevated enough for the office but also perfect for travel. • 7.1-ounce, 57/38/5 modal/poly/spandex French terry

- OGIO heat transfer label for tag-free comfort
- Rib knit bound collar, cuffs and hem
- Rib knit V inset at neck
- Silver reflective heat transfer O on front left hem

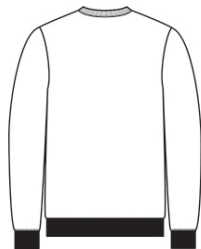
#### CARE INSTRUCTIONS

Machine Wash Cold With Like Colors. Do Not Use Fabric Softener. Only Non-Chlorine Bleach When Needed. Tumble Dry Low. Remove Promptly. Cool Iron If Necessary.

#### Sketches



front



back

# SPEC SHEET + MEASUREMENTS



OGIO® Luuma Flex Long Sleeve Crew. OG825

## PRODUCT MEASUREMENTS

	XS	S	M	L	XL	2XL	3XL	4XL
Body Length at Back	25 1/2	26 1/2	27 1/2	28 1/2	29 1/2	30 1/2	31	31 1/2
Chest	17 1/2	19	20 1/2	22	23 1/2	25	27	29
Sleeve Length from Center Back	33	33 3/4	34 1/2	35 1/4	36	36 3/4	37 1/2	38 1/4

**Body Length at Back:** Measured from high point shoulder to finished hem at back.

**Chest:** Measured across the chest one inch below armhole when laid flat.

**Sleeve Length from Center Back:** Measure from Center Back neck to shoulder point to sleeve hem.

## SIZE CHARTS

	XS	S	M	L	XL	2XL	3XL	4XL
Chest	32-34	35-37	38-40	41-43	44-46	47-49	50-53	54-57

# SPEC SHEET + MEASUREMENTS



OGIO® Luuma Flex Long Sleeve Crew. OG825

## HOW TO MEASURE

---



### CHEST

Measure under the arm and around the fullest part of the chest with arms down, keeping tape horizontal.

## COLORS

---



Blacktop  
PMS BLACK  
C



Petrol Grey  
Heather  
PMS COOL  
GREY 10C



Tarmac Grey  
Heather  
PMS 7540C