

# SPEC SHEET + MEASUREMENTS



## OGIO® Outstretch Full-Zip. OG830

### Product photo



Stretch your layering options with this modern full-zip that was inspired by the classic bomber jacket.

- 8.5-ounce, 87/13 cotton/spandex knit
- Lightly brushed
- OGIO heat transfer label for tag-free comfort
- Back locker loop
- Baseball-style rib knit collar
- Rib knit collar, cuffs and hem
- Center front reverse coil zipper with rubber OGIO pull
- Front flange across body
- Front exposed coil zippered hand pockets
- Black reflective O heat transfer on front left hem

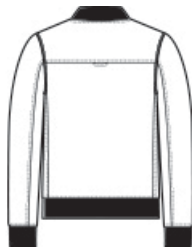
### CARE INSTRUCTIONS

Machine Wash Cold With Like Colors. Do Not Use Fabric Softener. Do Not Bleach. Tumble Dry Low. Remove Promptly. Cool Iron If Necessary.

### Sketches



front



back

# SPEC SHEET + MEASUREMENTS



OGIO® Outstretch Full-Zip. OG830

## PRODUCT MEASUREMENTS

|                                | XS     | S      | M      | L      | XL     | 2XL    | 3XL    | 4XL    |
|--------------------------------|--------|--------|--------|--------|--------|--------|--------|--------|
| Body Length at Back            | 26     | 27     | 28     | 29     | 30     | 31     | 31 1/2 | 32     |
| Chest                          | 18 1/2 | 20     | 21 1/2 | 23     | 24 1/2 | 26     | 28     | 30     |
| Sleeve Length from Center Back | 34 1/2 | 35 1/4 | 36     | 36 3/4 | 37 1/2 | 38 1/4 | 39     | 39 3/4 |

**Body Length at Back:** Measured from high point shoulder to finished hem at back.

**Chest:** Measured across the chest one inch below armhole when laid flat.

**Sleeve Length from Center Back:** Measure from Center Back neck to shoulder point to sleeve hem.

## SIZE CHARTS

|       | XS    | S     | M     | L     | XL    | 2XL   | 3XL   | 4XL   |
|-------|-------|-------|-------|-------|-------|-------|-------|-------|
| Chest | 32-34 | 35-37 | 38-40 | 41-43 | 44-46 | 47-49 | 50-53 | 54-57 |

# SPEC SHEET + MEASUREMENTS



OGIO® Outstretch Full-Zip. OG830

## HOW TO MEASURE

---



### CHEST

Measure under the arm and around the fullest part of the chest with arms down, keeping tape horizontal.

## COLORS

---



Blacktop  
PMS BLACK  
C



River Blue  
Navy  
PMS 7547C