

SPEC SHEET + MEASUREMENTS

PORT&CO.

Port & Company[®] Youth Core Blend 3/4-Sleeve Raglan Tee. PC55YRS

Product photo



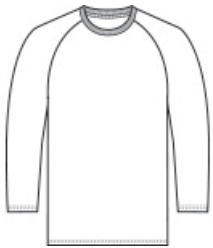
A classic, moisture-wicking team look at a great value.

- 5.5-ounce, 50/50 cotton/poly
- Made with up to 5% recycled polyester from plastic bottles
- Removable tag for comfort and relabeling
- Rib knit collar
- Back neck tape

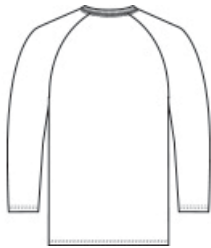
CARE INSTRUCTIONS

Machine wash cold inside out with like colors. Only non-chlorine bleach when needed. Tumble dry medium. Do not iron.

Sketches



front



back

SPEC SHEET + MEASUREMENTS

PORT&CO.

Port & Company[®] Youth Core Blend 3/4-Sleeve Raglan Tee. PC55YRS

PRODUCT MEASUREMENTS

	XS	S	M	L	XL
Body Length at Back	19	21	23	25	27
Chest	14	15 1/2	17	18	19 1/2
Size	4	6/8	10/12	14/16	18/20
Sleeve Length	16 3/4	19 3/8	21 1/4	23 1/8	25 3/4

Body Length at Back: Measured from high point shoulder to finished hem at back.

Chest: Measured across the chest one inch below armhole when laid flat.

Sleeve Length: Start at center of neck and measure down shoulder, down sleeve to hem.

SIZE CHARTS

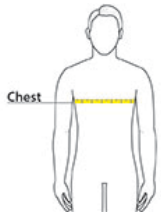
	XS	S	M	L	XL
Chest	25-26	26-28	28-30	30-32	32-35
Size	4	6/8	10/12	14/16	18/20

SPEC SHEET + MEASUREMENTS

PORT&CO.

Port & Company[®] Youth Core Blend 3/4-Sleeve Raglan Tee. PC55YRS

HOW TO MEASURE



CHEST

Measure under the arm and around the fullest part of the chest with arms down, keeping tape horizontal.