

SPEC SHEET + MEASUREMENTS



Red Kap® Industrial Work Short. PT26

Product photo



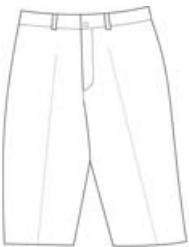
All the IL50 strength of our work pant made for on-the-job wear and warmer weather. Tested through 50 industrial launderer washes.

- 7.25-ounce, 65/35 poly/cotton twill with Touchtex PRO™ technology for superior color retention and stain release
- Jean-style waistband with button closure
- Two front and back pockets
- 10-inch inseam

CARE INSTRUCTIONS

Machine wash, tumble dry. Meets IL50 specifications.

Sketches



front



back

SPEC SHEET + MEASUREMENTS



Red Kap® Industrial Work Short. PT26

SIZE CHARTS

	28x0'	30x0'	32x0'	31x0'	33x0'	29x0'	34x0'	40x0'	37x0'	38x0'	42x0'	44x0'	36x0'	35x0'
Waist	28 1/2	30 1/2	32 1/2	31 1/2	33 1/2	29 1/2	34 1/2	40 1/2	37 1/2	38 1/2	42 1/2	44 1/2	36 1/2	35 1/2

HOW TO MEASURE

INSEAM

Measure a similar style pant that fits well and is the desired length. Measure from the crotch seam to the hem.

COLORS



Charcoal
PMS 7540C



Navy
PMS 532C