

# SPEC SHEET + MEASUREMENTS

RED HOUSE

Red House® Ladies Pinpoint Oxford Non-Iron Shirt.

RH250

## Product photo



Crafted from 3.8-ounce, 100% cotton, this elegant pinpoint oxford has a wrinkle-resistant finish so you always look your best—no iron required. Details like pucker-free taped seams, rounded adjustable cuffs, RH engraved buttons and a shirttail hem complement the sharp look. Open collar and neckline. Front and back darts.

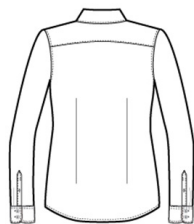
### CARE INSTRUCTIONS

Machine wash warm with like colors, only non-chlorine bleach if needed, tumble dry low, remove promptly & hang, warm iron if needed.

## Sketches



front



back

## PRODUCT MEASUREMENTS

---

	XS	S	M	L	XL	XXL	3XL	4XL
Body Length at Front	26 1/2	27	27 1/2	28	28 1/2	29	29 1/2	30
Bust	18	19	20	21 1/2	23	24 1/2	26 1/2	28 1/2
Size	2	4/6	8/10	12/14	16/18	20/22	24/26	28/30
Sleeve Length	31 1/2	32	32 1/2	33 1/8	33 3/4	34 3/8	34 3/4	35 1/8

**Body Length at Front:** Measure from high point shoulder to lowest point of hem at front.

**Bust:** Measured across the chest one inch below armhole when laid flat.

**Sleeve Length:** Start at center of neck and measure down shoulder, down sleeve to hem.

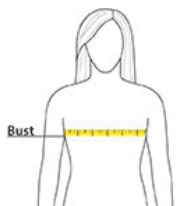
## SIZE CHARTS

---

	XS	S	M	L	XL	XXL	3XL	4XL
Bust	32-34	35-36	37-38	39-41	42-44	45-47	48-51	52-55
Size	2	4/6	8/10	12/14	16/18	20/22	24/26	28/30

## HOW TO MEASURE

---



### BUST

Measure under the arm and around the fullest part of the bust with arms down, keeping tape horizontal.

## COLORS

---