

SPEC SHEET + MEASUREMENTS

RED HOUSE®

Red House® Ladies Nailhead Non-Iron Shirt. RH470

Product photo

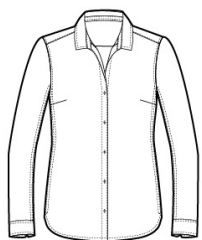


Thoroughly updated, this crisp nailhead shirt has a silky feel and a wrinkle-resistant finish for exceptional non-iron performance. 4-ounce, 60/40 cotton/polyester with pucker-free taped seams, RH engraved buttons to elevate the office-ready look. Open collar and neckline, bust darts and back seaming. Mitered adjustable cuffs.

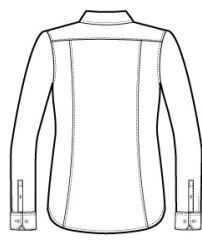
CARE INSTRUCTIONS

Machine wash cold with like colors, only non-chlorine bleach when needed, tumble dry low, warm iron if needed.

Sketches



front



back

SPEC SHEET + MEASUREMENTS

RED HOUSE

Red House® Ladies Nailhead Non-Iron Shirt. RH470

PRODUCT MEASUREMENTS

	XS	S	M	L	XL	XXL	3XL	4XL
Body Length at Front	26 1/2	27	27 1/2	28	28 1/2	29	29 1/2	30
Bust	18	19	20	21 1/2	23	24 1/2	26 1/2	28 1/2
Size	2	4/6	8/10	12/14	16/18	20/22	24/26	28/30
Sleeve Length	31 1/2	32	32 1/2	33 1/8	33 3/4	34 3/8	34 3/4	35 1/8

Body Length at Front: Measure from high point shoulder to lowest point of hem at front.

Bust: Measured across the chest one inch below armhole when laid flat.

Sleeve Length: Start at center of neck and measure down shoulder, down sleeve to hem.

SIZE CHARTS

	XS	S	M	L	XL	XXL	3XL	4XL
Bust	32-34	35-36	37-38	39-41	42-44	45-47	48-51	52-55
Size	2	4/6	8/10	12/14	16/18	20/22	24/26	28/30

SPEC SHEET + MEASUREMENTS

RED HOUSE®

Red House® Ladies Nailhead Non-Iron Shirt. RH470

HOW TO MEASURE



BUST

Measure under the arm and around the fullest part of the bust with arms down, keeping tape horizontal.