

SPEC SHEET + MEASUREMENTS

RED HOUSE®

Red House® Ladies 3/4-Sleeve Nailhead Non-Iron Shirt.
RH690

Product photo



Thoroughly updated, this crisp nailhead shirt has a silky feel and a wrinkle-resistant finish for exceptional non-iron performance. 4-ounce, 60/40 cotton/polyester with pucker-free taped seams, RH engraved buttons to elevate the office-ready look. Open collar, covered placket. Front and back darts. Two-button cuffs.

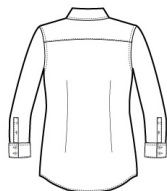
CARE INSTRUCTIONS

Machine wash cold with like colors, only non-chlorine bleach when needed, tumble dry low, warm iron if needed.

Sketches



front



back

SPEC SHEET + MEASUREMENTS

RED HOUSE

Red House® Ladies 3/4-Sleeve Nailhead Non-Iron Shirt.
RH690

PRODUCT MEASUREMENTS

| | XS | S | M | L | XL | XXL | 3XL | 4XL |
|----------------------|--------|--------|--------|--------|--------|--------|--------|--------|
| Body Length at Front | 26 1/2 | 27 | 27 1/2 | 28 | 28 1/2 | 29 | 29 1/2 | 30 |
| Bust | 18 | 19 | 20 | 21 1/2 | 23 | 24 1/2 | 26 1/2 | 28 1/2 |
| Size | 2 | 4/6 | 8/10 | 12/14 | 16/18 | 20/22 | 24/26 | 28/30 |
| Sleeve Length | 25 | 25 1/2 | 26 | 26 5/8 | 27 1/4 | 27 7/8 | 27 7/8 | 28 5/8 |

Body Length at Front: Measure from high point shoulder to lowest point of hem at front.

Bust: Measured across the chest one inch below armhole when laid flat.

Sleeve Length: Start at center of neck and measure down shoulder, down sleeve to hem.

SIZE CHARTS

| | XS | S | M | L | XL | XXL | 3XL | 4XL |
|------|-------|-------|-------|-------|-------|-------|-------|-------|
| Bust | 32-34 | 35-36 | 37-38 | 39-41 | 42-44 | 45-47 | 48-51 | 52-55 |
| Size | 2 | 4/6 | 8/10 | 12/14 | 16/18 | 20/22 | 24/26 | 28/30 |

SPEC SHEET + MEASUREMENTS

RED HOUSE

Red House® Ladies 3/4-Sleeve Nailhead Non-Iron Shirt.
RH690

HOW TO MEASURE



BUST

Measure under the arm and around the fullest part of the bust with arms down, keeping tape horizontal.