

## SPEC SHEET + MEASUREMENTS



### Russell Outdoors™ Realtree® Colorblock Performance Tee. RU151

#### Product photo



For the outdoor explorer who wants the Realtree EDGE® print but prefers a more technical feel and moisture-wicking. It's a perfect base layer or stand-alone tee, ready for work or adventure. Colorblock body provides ample decoration space for your branding to shine.

- 3.8-ounce, 100% polyester with moisture-wicking
- Tag-free label
- Realtree EDGE® print
- Shoulder-to-shoulder neck taping
- Exterior woven Russell Outdoors™ tab at hem

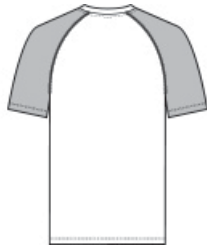
#### CARE INSTRUCTIONS

Machine Wash Cold With Like Colors. Do Not Use Fabric Softener. Do Not Bleach. Tumble Dry Low. Remove Promptly. Cool Iron If Needed.

#### Sketches



front



back

# SPEC SHEET + MEASUREMENTS



## Russell Outdoors™ Realtree® Colorblock Performance Tee. RU151

### PRODUCT MEASUREMENTS

	XS	S	M	L	XL	2XL	3XL	4XL
Body Length at Back	27	28	29	30	31	32	32 1/2	33
Chest	18	19 1/2	21	22 1/2	24	25 1/2	27 1/2	29 1/2
Raglans and Dolmans Sleeve Length	16 3/4	17 1/2	18 1/4	19	19 3/4	20 1/2	21 1/4	22

**Body Length at Back:** Measured from high point shoulder to finished hem at back.

**Chest:** Measured across the chest one inch below armhole when laid flat.

**Raglans and Dolmans Sleeve Length:** Measure from neck edge to finished hem.

### SIZE CHARTS

	XS	S	M	L	XL	2XL	3XL	4XL
Chest	32-34	35-37	38-40	41-43	44-46	47-49	50-53	54-57

# SPEC SHEET + MEASUREMENTS



Russell Outdoors™ Realtree® Colorblock Performance  
Tee. RU151

## HOW TO MEASURE

---



### CHEST

Measure under the arm and around the fullest part of the chest with arms down, keeping tape horizontal.

## COLORS

---



Black/  
Realtree Edge  
PMS BLACK  
C



Grey Concrete  
Heather/  
Realtree Edge  
PMS COOL  
GRAY 10C



Olive Drab  
Green/  
Realtree Edge  
PMS 7771C