

SPEC SHEET + MEASUREMENTS



Russell Outdoors™ Realtree® Atlas Colorblock Soft Shell Vest. RU604

Product photo



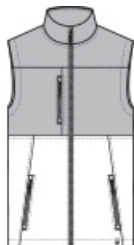
Modern, lightweight and ideal as a work-to-play outer layer for those who love hiking and time in the outdoors. Brushed fleece interior is perfect for layering on a crisp fall day or over a tee on a cool spring morning. Colorblock chest area provides ample decoration space to highlight a logo and allow your branding to shine.

- 8.4-ounce, 100% polyester with TPU laminate and brushed fleece interior
- Durable water repellent (DWR) finish
- 5K/5K weather protection
- Realtree EDGE® print
- Chest pocket and zippered hand pockets with molded zippers and brushed metal pulls
- Exterior embossed faux leather tab at hem

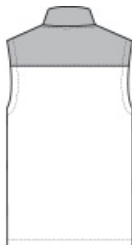
CARE INSTRUCTIONS

Machine Wash Cold. Do Not Use Softener. Only Non-Chlorine Bleach When Needed. Tumble Dry Low. Do Not Iron. Do Not Dry Clean.

Sketches



front



back

SPEC SHEET + MEASUREMENTS



Russell Outdoors™ Realtree® Atlas Colorblock Soft Shell Vest. RU604

PRODUCT MEASUREMENTS

	S	M	L	XL	2XL	3XL	4XL	
Body Length at Back	28	29	30	31	32	32 1/2	33	
Chest	19	20 1/2	22	23 1/2	25	26 1/2	28 1/2	30 1/2

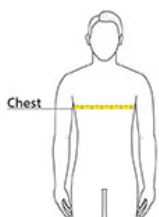
Body Length at Back: Measured from high point shoulder to finished hem at back.

Chest: Measured across the chest one inch below armhole when laid flat.

SIZE CHARTS

	XS	S	M	L	XL	2XL	3XL	4XL
Chest	32-34	35-37	38-40	41-43	44-46	47-49	50-53	54-57

HOW TO MEASURE



CHEST

Measure under the arm and around the fullest part of the chest with arms down, keeping tape horizontal.

SPEC SHEET + MEASUREMENTS



Russell Outdoors™ Realtree® Atlas Colorblock Soft Shell
Vest. RU604

COLORS



Cargo Brown/
Realtree Edge
PMS 2335C



Deep Black/
Realtree Edge
PMS BLACK
C