

SPEC SHEET + MEASUREMENTS



Tommy Bahama® Palmetto Paradise Polo. ST224065TB

Product photo



We're proud to offer this direct-from-retail Tommy Bahama style, while supplies last.

Supremely soft and adorned with contrast stitching, this polo delivers the comfort and heathered vintage-look you desire on off-duty days. You'll love its exceptionally soft fabric and washability.

- 5.9-ounce, 70/30 Tencel™ Modal/polyester
- Self-fabric collar
- 3-button placket
- Distinctive contrast stitching plus contrast fabric at inner placket and inner collar
- Embroidered Marlin on left sleeve

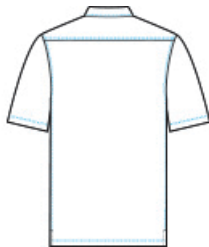
CARE INSTRUCTIONS

Machine Wash Cold With Like Colors. Gentle Cycle. Non-Chlorine Bleach If Needed. Tumble Dry Low. Cool Iron Or Dry Clean.

Sketches



front



back

SPEC SHEET + MEASUREMENTS



Tommy Bahama® Palmetto Paradise Polo. ST224065TB

PRODUCT MEASUREMENTS

	S	M	L	XL	2XL	3XL
Body Length at Back	28	28 3/4	29 1/2	30 1/4	31	31 3/4
Chest	21	22	23	24 1/2	26	27
Sleeve Length from Center Back	18	18 3/4	19 1/2	20 1/4	21	21 3/4

Body Length at Back: Measured from high point shoulder to finished hem at back.

Chest: Measured across the chest one inch below armhole when laid flat.

Sleeve Length from Center Back: Measure from Center Back neck to shoulder point to sleeve hem.

SIZE CHARTS

	S	M	L	XL	2XL	3XL
Chest	36-38	39-41	42-44	45-47	48-50	51-53

SPEC SHEET + MEASUREMENTS



Tommy Bahama® Palmetto Paradise Polo. ST224065TB

HOW TO MEASURE



CHEST

Measure under the arm and around the fullest part of the chest with arms down, keeping tape horizontal.

COLORS



Black
PMS BLACK
3C



Denim
PMS 7546C



Team Blue
PMS 7686C



Viridian Pine
PMS 7736C