

# SPEC SHEET + MEASUREMENTS

**SPORT-TEK**

## Sport-Tek® Long Sleeve Digi Camo Tee. ST460LS

### Product photo



A subtle digi camo pattern gives this moisture-wicking, breathable performance tee a unique edge.

- 3.8-ounce, 100% polyester interlock with sublimated digi camo print
- Removable tag for comfort and relabeling
- Digi camo print on sleeves

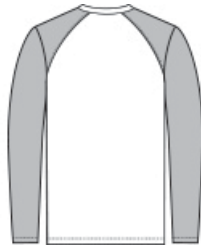
### CARE INSTRUCTIONS

Machine wash cold with like colors. Do not use fabric softener. Do not bleach. Tumble dry low. Remove promptly. Cool iron if needed. Do not dry clean.

### Sketches



front



back

# SPEC SHEET + MEASUREMENTS



## Sport-Tek® Long Sleeve Digi Camo Tee. ST460LS

### PRODUCT MEASUREMENTS

	XS	S	M	L	XL	2XL	3XL	4XL
Body Length at Back	27	28	29	30	31	32	32 1/2	33
Chest	18	19 1/2	21	22 1/2	24	25 1/2	27 1/2	29 1/2
Sleeve Length from Center Back	34 1/2	35 1/4	36	36 3/4	37 1/2	38 1/4	39	39 3/4

**Body Length at Back:** Measured from high point shoulder to finished hem at back.

**Chest:** Measured across the chest one inch below armhole when laid flat.

**Sleeve Length from Center Back:** Measure from Center Back neck to shoulder point to sleeve hem.

### SIZE CHARTS

	XS	S	M	L	XL	2XL	3XL	4XL
Chest	32-34	35-37	38-40	41-43	44-46	47-49	50-53	54-57

# SPEC SHEET + MEASUREMENTS



Sport-Tek® Long Sleeve Digi Camo Tee. ST460LS

## HOW TO MEASURE



### CHEST

Measure under the arm and around the fullest part of the chest with arms down, keeping tape horizontal.

## COLORS



Black  
PMS BLACK  
C



Grey Concrete  
PMS COOL  
GRAY 10C



Olive Drab  
Green  
PMS 7771C



True Navy  
PMS 533C



True Red  
PMS 200C



True Royal  
PMS 7687C



White