

# SPEC SHEET + MEASUREMENTS

**SPORT-TEK**

## Sport-Tek® Heather Contender™ Contrast Polo. ST667

### Product photo



Our moisture-wicking, snag-resistant favorite with a more subtle colorblock design.

- 3.8-ounce, 100% polyester jersey
- 3.8-ounce, 100% polyester interlock collar, placket and cuffs
- Removable tag for comfort
- Self-fabric collar
- Taped neck
- 3-button placket with dyed-to-match buttons
- Contrast colorblocking at collar, placket and cuffs
- Set-in, open hem sleeves

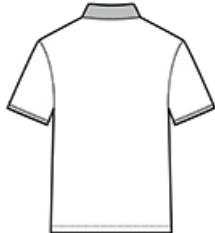
### CARE INSTRUCTIONS

Machine wash cold with like colors. Do not bleach. Do not use softener. Tumble dry low. Remove promptly. Cool iron if needed. Do not dry clean.

### Sketches



front



back

# SPEC SHEET + MEASUREMENTS

**SPORT-TEK**

Sport-Tek® Heather Contender™ Contrast Polo. ST667

## PRODUCT MEASUREMENTS

	XS	S	M	L	XL	2XL	3XL	4XL
Body Length at Back	28	29	30	31	32	33	33 1/2	34
Chest	18 1/2	20	21 1/2	23	24 1/2	26	28	30
Sleeve Length	17 3/4	18 1/2	19 1/4	20	20 3/4	21 1/2	22 1/4	23

**Body Length at Back:** Measured from high point shoulder to finished hem at back.

**Chest:** Measured across the chest one inch below armhole when laid flat.

**Sleeve Length:** Start at center of neck and measure down shoulder, down sleeve to hem.

## SIZE CHARTS

	XS	S	M	L	XL	2XL	3XL	4XL
Chest	32-34	35-37	38-40	41-43	44-46	47-49	50-53	54-57

## HOW TO MEASURE



### CHEST

Measure under the arm and around the fullest part of the chest with arms down, keeping tape horizontal.