

SPEC SHEET + MEASUREMENTS

SPORT-TEK

Sport-Tek® Ombre Heather Polo. ST671

Product photo



This moisture-wicking, snag-resistant polo gradually blends a heather look with an allover sublimated print for an innovative take on traditional athletic colors.

- 4.9-ounce, 100% polyester sublimated jersey
- Tag-free label
- Self-fabric collar
- 3-button placket with dyed-to-match buttons
- Set-in, open hem sleeves
- Side vents

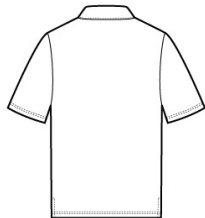
CARE INSTRUCTIONS

Machine wash cold with like colors. Only non-chlorine bleach. When needed tumble dry low, remove promptly. Cool iron if needed. Do not use softener. Do not dry clean.

Sketches



front



back

SPEC SHEET + MEASUREMENTS

SPORT-TEK

Sport-Tek® Ombre Heather Polo. ST671

PRODUCT MEASUREMENTS

	XS	S	M	L	XL	2XL	3XL	4XL
Body Length at Front	28	29	30	31	32	33	33 1/2	34
Chest	18 3/4	20 1/4	21 3/4	23 1/4	24 3/4	26 1/4	28 1/4	30 1/4
Sleeve Length	17 1/4	18	18 3/4	19 1/2	20 1/4	21	21 3/4	22 1/2

Body Length at Front: Measure from high point shoulder to lowest point of hem at front.

Chest: Measured across the chest one inch below armhole when laid flat.

Sleeve Length: Start at center of neck and measure down shoulder, down sleeve to hem.

SIZE CHARTS

	XS	S	M	L	XL	2XL	3XL	4XL
Chest	32-34	35-37	38-40	41-43	44-46	47-49	50-53	54-57

HOW TO MEASURE



CHEST

Measure under the arm and around the fullest part of the chest with arms down, keeping tape horizontal.

SPEC SHEET + MEASUREMENTS



Sport-Tek® Ombre Heather Polo. ST671

COLORS



Carolina Blue/
True Navy
PMS 7454C



Deep Red/
Black
PMS 201C



Iron Grey/
Black
PMS 7540C



White/
Graphite
PMS 432C



White/ True
Royal
PMS 7687C