

## SPEC SHEET + MEASUREMENTS

**SPORT-TEK**

### Sport-Tek® Exchange 1.5 Long Sleeve 1/2-Zip. ST711

#### Product photo



Why did we name this stretchable, moisture-wicking 1/2-zip the 1.5? Because it's light enough to wear as a tee, but warm enough to be a light layer.

- 5.6-ounce, 88/12 poly/spandex
- Removable tag for comfort and relabeling
- Reverse coil zipper
- Coverstitch seams throughout
- Open cuffs and hem

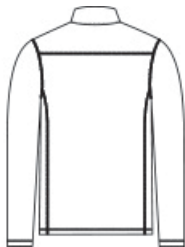
#### CARE INSTRUCTIONS

Machine wash with like colors. Do not use fabric softener, only non-chlorine bleach, when needed. Tumble dry low, remove promptly. Cool iron if necessary. Do not dry clean.

#### Sketches



front



back

# SPEC SHEET + MEASUREMENTS



## Sport-Tek® Exchange 1.5 Long Sleeve 1/2-Zip. ST711

### PRODUCT MEASUREMENTS

	XS	S	M	L	XL	2XL	3XL	4XL
Body Length at Back	26 1/2	27 1/2	28 1/2	29 1/2	30 1/2	31 1/2	32	32 1/2
Chest	18 1/2	20	21 1/2	23	24 1/2	26	28	30
Sleeve Length from Center Back	34	34 3/4	35 1/2	36 1/4	37	37 3/4	38 1/2	39 1/4

**Body Length at Back:** Measured from high point shoulder to finished hem at back.

**Chest:** Measured across the chest one inch below armhole when laid flat.

**Sleeve Length from Center Back:** Measure from Center Back neck to shoulder point to sleeve hem.

### SIZE CHARTS

	XS	S	M	L	XL	2XL	3XL	4XL
Chest	32-34	35-37	38-40	41-43	44-46	47-49	50-53	54-57

# SPEC SHEET + MEASUREMENTS



Sport-Tek® Exchange 1.5 Long Sleeve 1/2-Zip. ST711

## HOW TO MEASURE



### CHEST

Measure under the arm and around the fullest part of the chest with arms down, keeping tape horizontal.

## COLORS



Dark Denim  
Heather  
PMS 2380C



Graphite  
Heather  
PMS COOL  
GRAY 11C



Grey Heather  
PMS COOL  
GRAY 10C



True Royal  
Heather  
PMS 7687C