

SPEC SHEET + MEASUREMENTS

SPORT-TEK

Sport-Tek® Phenom 1/4-Zip. ST841

Product photo

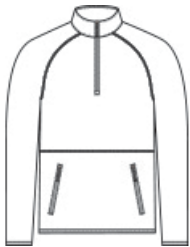


Constructed with a midweight spacer knit fabrication, this modern 1/4-zip can be worn after training, while traveling or as a corporate layer.

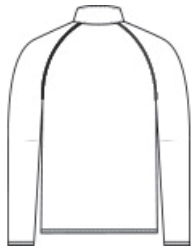
- 8.8-ounce, 56/44 cotton/polyester spacer knit
- Reverse coil center front zipper
- Reverse coil zippered pockets
- Corded black zipper pull with reflective detail
- Contrast stretch binding on sleeves and hem

Care Instructions Machine Wash Cold With Like Colors. Do Not Bleach. Tumble Dry Low. Remove Promptly. Cool Iron, If Needed.

Sketches



front



back

SPEC SHEET + MEASUREMENTS



Sport-Tek[®] Phenom 1/4-Zip. ST841

PRODUCT MEASUREMENTS

	XS	S	M	L	XL	2XL	3XL	4XL
Body Length at Back	26	27	28	29	30	31	31 1/2	32
Chest	20	21 1/2	23	24 1/2	26	27 1/2	29 1/2	31 1/2
Raglans and Dolmans Sleeve Length	34 1/8	34 3/4	35 3/8	36	36 5/8	37 1/4	38	38 3/4

Body Length at Back: Measured from high point shoulder to finished hem at back.

Chest: Measured across the chest one inch below armhole when laid flat.

Raglans and Dolmans Sleeve Length: Measure from neck edge to finished hem.

SIZE CHARTS

	XS	S	M	L	XL	2XL	3XL	4XL
Chest	32-34	35-37	38-40	41-43	44-46	47-49	50-53	54-57

SPEC SHEET + MEASUREMENTS



Sport-Tek® Phenom 1/4-Zip. ST841

HOW TO MEASURE



CHEST

Measure under the arm and around the fullest part of the chest with arms down, keeping tape horizontal.

COLORS



Athletic
Heather
PMS COOL
GRAY 5C



Black
PMS BLACK
C



Ecu
PMS 4195C



Iron Grey
PMS 7540C



True Navy
PMS 533C