

SPEC SHEET + MEASUREMENTS

PORT AUTHORITY.

Port Authority® Marled Crew Sweater. SW417

Product photo



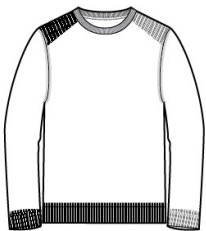
Two-toned marled yarns give this warm sweater a handsome look.

- 60/40 cotton/acrylic
- Fully fashioned seams
- Saddle shoulders with back-to-front rib detail
- 1x1 rib knit neck, cuffs and hem

CARE INSTRUCTIONS

Machine wash cold with like colors, only non-chlorine bleach when needed, tumble dry low, low iron if needed.

Sketches



front



back

SPEC SHEET + MEASUREMENTS

PORT AUTHORITY

Port Authority® Marled Crew Sweater. SW417

PRODUCT MEASUREMENTS

	XS	S	M	L	XL	2XL	3XL	4XL
Body Length at Front	25 1/2	26 1/2	27 1/2	28 1/2	29 1/2	30 1/2	31	31 1/2
Chest	19	20 1/2	22	23 1/2	25	27	29	31
Sleeve Length	33 1/4	34	34 3/4	35 1/2	36 1/4	37	37 3/4	38 1/2

Body Length at Front: Measure from high point shoulder to lowest point of hem at front.

Chest: Measured across the chest one inch below armhole when laid flat.

Sleeve Length: Start at center of neck and measure down shoulder, down sleeve to hem.

SIZE CHARTS

	XS	S	M	L	XL	2XL	3XL	4XL
Chest	32-34	35-37	38-40	41-43	44-46	47-49	50-53	54-57

HOW TO MEASURE



CHEST

Measure under the arm and around the fullest part of the chest with arms down, keeping tape horizontal.