

## SPEC SHEET + MEASUREMENTS

**stanley**  
**/STELLA**

Stanley/Stella Unisex Cooper Dry Hooded Sweatshirt.

SXU028

### Product photo



A boxy hoodie with a dry hand feel. The unique character of organic cotton French terry provides a perfect place for a brand logo.

- 11.8-ounce (400-gram)
- 100% organic combed cotton French terry
- Double-layer self-fabric hood
- Jersey back neck taping
- Self-fabric half moon at back neck
- 2x1 rib knit cuffs and hem
- Double-needle topstitch on armholes, cuffs and hem
- Front pouch pocket
- 100% recycled polyester tear-away label
- Oversized fit: Designed for comfort, with more ease of movement.

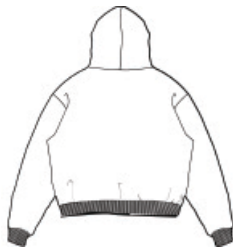
### CARE INSTRUCTIONS

Machine Wash Cold. Do Not Bleach. Tumble Dry Low. Iron Low Heat. Do Not Dry Clean.

### Sketches



front



back

# SPEC SHEET + MEASUREMENTS

stanley  
/STELLA

Stanley/Stella Unisex Cooper Dry Hooded Sweatshirt.  
SXU028

## PRODUCT MEASUREMENTS

	XXS	XS	S	M	L	XL	2XL	3XL
Body Length at Back	26	26 7/9	27 5/9	28 1/3	29 1/7	30 1/3	31 2/7	32 2/7
Chest	22	22 5/6	23 5/8	25 1/5	26 7/9	28 3/4	30 5/7	32 2/3
Sleeve Length from Center Back	35	35 5/8	36 2/9	37	37 4/5	38 2/3	39 3/8	40

**Body Length at Back:** Measured from high point shoulder to finished hem at back.

**Chest:** Measured across the chest one inch below armhole when laid flat.

**Sleeve Length from Center Back:** Measure from Center Back neck to shoulder point to sleeve hem.

## SIZE CHARTS

	XXS	XS	S	M	L	XL	2XL	3XL
Chest	32-33 1/2	34-35	36-37	38-40	41-43	44-47	48-51	52-55

# SPEC SHEET + MEASUREMENTS

**Stanley**  
**/STELLA**

Stanley/Stella Unisex Cooper Dry Hooded Sweatshirt.  
SXU028

## HOW TO MEASURE



### CHEST WIDTH

Measure under the arm and around the fullest part of the chest with arms down, keeping tape horizontal.

## COLORS



Aloe  
PMS 5645C



Black  
PMS 426C



Desert Dust  
PMS 4267C

FadedOlive



French Navy  
PMS 4280C



Heather Grey  
PMS 4289C



Kaffa Coffee  
PMS 4091C

MistyGrey

Mocha



Stargazer  
PMS 4161C



White  
PMS 2706C



Worker Blue  
PMS 3584C