

## SPEC SHEET + MEASUREMENTS



TravisMathew Balboa Hooded Full-Zip Jacket.

TM1MZ338

### Product photo



Take life at ease in this lightweight jacket, whether you're commuting, hanging out or playing eighteen. Designed with that keen TravisMathew eye for layering comfort and quick-dry performance, this lightweight jacket has elevated style and easy movement.

- 4.2-ounce, 90/10 polyester/spandex
- Easy wash and wear
- Three-panel hood with dyed-to-match drawcords
- Zippered side-entry pockets
- TM logo woven patch label at left hem

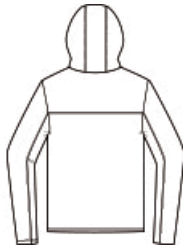
### CARE INSTRUCTIONS

Machine Wash Cold With Like Colors. Gentle Cycle. Tumble Dry Low. Remove Promptly. Cool Iron If Needed.

### Sketches



front



back

# SPEC SHEET + MEASUREMENTS



## TravisMathew Balboa Hooded Full-Zip Jacket. TM1MZ338

### PRODUCT MEASUREMENTS

	S	M	L	XL	2XL	3XL
Body Length at Back	27 3/4	29	29 3/4	30 3/4	31 3/4	32 3/4
Chest	20	21 1/2	23	24 1/2	26	27 1/2
Sleeve Length from Center Back	34	35	36	37	38	39

**Body Length at Back:** Measured from high point shoulder to finished hem at back.

**Chest:** Measured across the chest one inch below armhole when laid flat.

**Sleeve Length from Center Back:** Measure from Center Back neck to shoulder point to sleeve hem.

### SIZE CHARTS

	S	M	L	XL	2XL	3XL
Chest	35-37	38-40	42-44	45-47	48-50	52-54

# SPEC SHEET + MEASUREMENTS

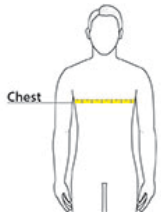


TravisMathew Balboa Hooded Full-Zip Jacket.

TM1MZ338

## HOW TO MEASURE

---



### CHEST

Measure under the arm and around the fullest part of the chest with arms down, keeping tape horizontal.

## COLORS

---



Black  
PMS 426C



Blue Nights  
Heather  
PMS 432C



Dark Grey  
Heather  
PMS 425C