

SPEC SHEET + MEASUREMENTS



Volunteer Knitwear™ Chore Fleece Full-Zip Hoodie. VL130ZH

Product photo



This hefty, true-blue fleece has a grittier, textured hand—plus it's crafted with durability to stand the test of time.

- 13-ounce, 80/20 cotton/poly
- 50/50 cotton/poly (Charcoal Heather)
- Proudly American made
- 1-panel hood with dart for fit
- Metal grommets with drawcords with knotted ends
- Twill neck tape
- Slightly forward shoulders
- Metal zipper
- 1x1 rib knit cuffs and hem
- Front pockets
- Side seamed
- Woven label

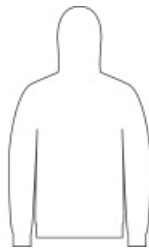
CARE INSTRUCTIONS

Machine Wash Cold Inside Out With Like Colors. Use Non-Chlorine Bleach When Needed. Tumble Dry Low. Do Not Iron.

Sketches



front



back

SPEC SHEET + MEASUREMENTS



Volunteer Knitwear™ Chore Fleece Full-Zip Hoodie. VL130ZH

PRODUCT MEASUREMENTS

	S	M	L	XL	2XL	3XL	4XL
Body Length at Back	27 1/2	28 1/2	29 1/2	30 1/2	31 1/2	32	32 1/2
Chest	21	22 1/2	24	25 1/2	27	29	31
Sleeve Length from Center Back	35	35 3/4	36 1/2	37 1/4	38	38 3/4	39 1/2

Body Length at Back: Measured from high point shoulder to finished hem at back.

Chest: Measured across the chest one inch below armhole when laid flat.

Sleeve Length from Center Back: Measure from Center Back neck to shoulder point to sleeve hem.

SIZE CHARTS

	S	M	L	XL	2XL	3XL	4XL
Chest	35-37	38-40	41-43	44-46	47-49	50-53	54-57

SPEC SHEET + MEASUREMENTS



Volunteer Knitwear™ Chore Fleece Full-Zip Hoodie.
VL130ZH

HOW TO MEASURE



CHEST

Measure under the arm and around the fullest part of the chest with arms down, keeping tape horizontal.

COLORS



Charcoal
Heather



Deep Black
PMS BLACK
C



Heather Grey