

SPEC SHEET + MEASUREMENTS

PORT AUTHORITY.

Port Authority® Slim Fit Long Sleeve Carefree Poplin Shirt. W103

Product photo



Lightweight and breathable, our cotton-rich shirts keep their professional edge thanks to a stain-release finish, which releases stains during washing. Budget-friendly and durable, these virtually carefree shirts feature an Easy Care blend and finish. They also color-coordinate with our Core Classic Pique Polos for seamless uniforming.

- 3.3-ounce, 55/45 cotton/poly
- For those who prefer a slim (but not tight) fit that sits closer to the body
- Open collar
- Dyed-to-match buttons
- Rounded adjustable cuffs

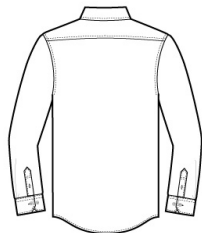
CARE INSTRUCTIONS

Machine wash cold with like colors, only non-chlorine bleach when needed, tumble dry low, low iron if needed.

Sketches



front



back

SPEC SHEET + MEASUREMENTS

PORT AUTHORITY

Port Authority® Slim Fit Long Sleeve Carefree Poplin
Shirt. W103

PRODUCT MEASUREMENTS

	XS	S	M	L	XL	2XL
Body Length at Front	29	30	31	32	33	34
Chest	19	20 1/2	22	23 1/2	25	26 1/2
Neck	16 3/8	16 3/8	16 7/8	17 3/8	18 3/8	19 1/8
Sleeve Length	33 3/4	34 1/2	35 1/4	36	36 3/4	37 1/2

Body Length at Front: Measure from high point shoulder to lowest point of hem at front.

Chest: Measured across the chest one inch below armhole when laid flat.

Neck: Measured from center of button to center of buttonhole.

Sleeve Length: Start at center of neck and measure down shoulder, down sleeve to hem.

SIZE CHARTS

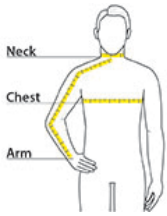
	XS	S	M	L	XL	2XL
Arm	30 1/2	32	34	35	36 1/2	37 1/2
Chest	32-34	35-37	38-40	41-43	44-46	47-49
Neck	16 3/8	16 3/8	16 7/8	17 3/8	18 3/8	19 1/8

SPEC SHEET + MEASUREMENTS

PORT AUTHORITY

Port Authority® Slim Fit Long Sleeve Carefree Poplin
Shirt. W103

HOW TO MEASURE



Neck Measure around the fullest part of the neck at the base. **Chest Width** Measure under the arm and around the fullest part of the chest with arms down, keeping tape horizontal. **Arm** Place hand on hip. Start at the center of the back of the neck and measure across the shoulder, to the elbow, and then down to the wrist.

COLORS



Carolina Blue
PMS 2142C



Deep Black
PMS NTR
BLACK C



Graphite
PMS 7540C



River Blue
Navy
PMS 533C



White